

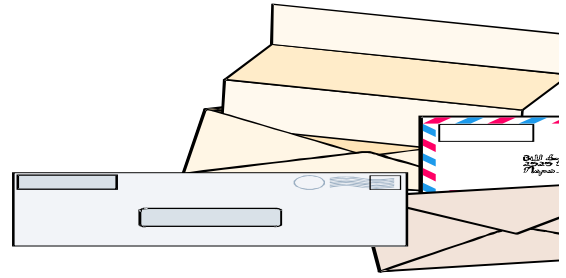
# ATGLEN BOROUGH NEWS

December 2009

## 2010 Budget

At the November 2, 2009 meeting, the Borough Council approved the \$3.1M spending plan maintaining the 2007 tax rate of 4.10 mills. The Real Estate Tax and Earned Income Tax remain the two main sources of Borough revenue. In these difficult economic times, not only does the loss of income have an effect on our personal lives it also impacts municipal funding. The Budget has been difficult to balance as financial strains worsen. Major funds that make up the 2010 Budget include the General Fund, Sewer Fund, Water Fund, Highway Aid Fund and the Capital Reserve Fund. With the exception of the Capital Reserve Fund, expenses exceed revenues in every fund and require delving into the Reserve Funds. Despite the 2010 budget freeze on expenses this will be the third year the Borough has dipped into reserve funds. The budget provides for the same level of service in all areas, including maintenance of Borough property, road maintenance, water, street and sewer maintenance, fire and ambulance service, zoning and code service, general government, etc. Police Services continue to be provided by the Parkesburg Police Department and the PA State Police.

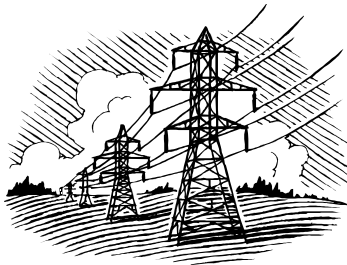
Although the Borough held the 2007 tax rate, it became necessary to increase the water, sewer and trash rates as we continue with phased increases as a result of the state/federal sewer and water mandates and usage demands. The Borough also needs rate relief to keep pace with increasing operational costs, such as chemicals, fuel, power and increased rates from PA American. The Borough relies on PA American to supplement the increased demands on our system. We have been utilizing the water source for several years due to the increased



growth demands and are also required to have the PA interconnect for fire fighting purposes.

Effective with the January 1<sup>st</sup> billing, **Water Rates** will increase to a minimum of \$55.00 per unit up to 6,000 gallons and \$6.55 per 1,000 gallons over the minimum per quarter. Phase III of the **Sewer Rate** also takes affect December 1<sup>st</sup> with the quarterly rate increase to \$135.00 per quarter per unit. As explained last year, the State has mandated municipalities reduce the amount of nutrients to clean up the Chesapeake Bay by reducing the amount of nutrients flowing into the Susquehanna River. In October, DEP completed a test pilot program by gathering samples and monitoring the sewer system and will present recommendations to the Borough regarding the Bay requirements. We can't stress enough this is going to be a very expensive mandate. The sewer system was constructed in 1969 and the type of processing system we have cannot meet the proposed nutrient requirements. Previously, it was recommended the Borough construct a new system but without federal/state assistance the cost is not viable. The **Trash Rate** increases \$2.00 per quarter to \$54.00 due to disposal costs.

Economic development projects include application for funding for the new water source at an estimated cost of \$600,000. The Borough received the necessary regulatory approvals required to complete the test drilling on well site #1 located in West Sadsbury Township. Following the test drilling it was determined the well site appeared to be a viable source for the Borough. The next step is converting the test well to a public water supply well including obligatory filtration requirements. With or without grant funding it is necessary to move forward with the well project.



## Electricity – Your Choice

As you may be aware, residential customers are facing large increases in the cost of electricity beginning January 2010. Municipalities are also facing those same large increases. There are three core elements of electricity service: **Generation** (making electricity), **Transmission** (moving electricity through the wires) and **Distribution** (delivering electricity to your home). Deregulation gives you the power to choose whom you buy your electricity from and how it is generated. If you decide to change who you buy your electricity from, your electricity would still be distributed through the same regulated transmission and distribution system it has always been (PPL).

Generation is unregulated while the Transmission and Distribution is Regulated. Information on suppliers with offers for PPL customers can be found on the pplelectric.com web site or at the Office of the Consumer Advocate's Web site: [oca.state.pa.us/Industry/Electric/elecomp/ElectricGuides.htm](http://oca.state.pa.us/Industry/Electric/elecomp/ElectricGuides.htm)

The Borough participates in a Municipal Utility Alliance Program that utilizes cooperative purchasing of electricity to lower the costs of the impending rate hike. The Borough's 2009 total electric cost was \$71,200, which represents one quarter of the total 4.10 millage Borough tax rate. Street lighting costs were \$25,000 and are a regulated cost and cannot be negotiated.

With the currently favorable electricity markets and volatility of energy prices, you may want to look for cost-saving alternatives to manage and reduce your energy consumption.



## Lower Telephone Service Rates Available for Low Income Customers

There are two programs to help low income residential customers get or keep their telephone service.

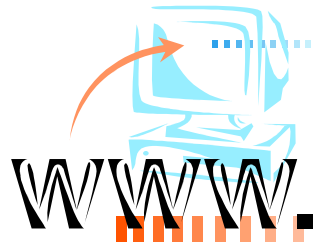
**Lifeline 135** gives a monthly credit off your basic service telephone bill.

**Link up America** gives 50% off your hook-up charge, up to a maximum of \$30.00, this does not include costs for inside wiring.

For income level qualification go to:

<http://www.puc.state.pa.us/utilitychoice/downloads/telephone/lowincome.pdf> or call your local phone company and ask about these two programs.

Frontier Communications 800.225.5282



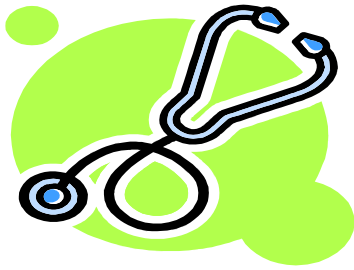
Remember to check Atglen Borough's website at

[www.atglen.org](http://www.atglen.org)

for important Borough information and useful

links ..... Like the **Appliance Recycling Program from PPL Electric** – where you can Recycle your old refrigerator\* or freezer and get a check for \$35.00. (\*free removal) go to our website for the link or call PPL Electric's customer service center toll free at 877-270-3522 for the program details.





## Health and Wellness Screenings Scheduled

The Chester County Health Department will be offering health screenings at the [Government Services Center](#) on **Wednesday, December 2nd from 2:00-5:00 pm**. Free screenings will be given for anemia, blood sugar (1-2 hour fast preferred), and blood pressure. A \$15 fee is charged for non-fasting cholesterol screening (appointment needed), which measures total and HDL cholesterol levels. The screenings provide an opportunity to learn more about the risk factors for cardiovascular disease, high blood pressure, diabetes and anemia. Health professionals will offer the screening tests in combination with information on the benefits of healthy eating and regular physical activity. For directions and appointment, call 610-344-6490 or email [cchd@chesco.org](mailto:cchd@chesco.org).

### UPCOMING EVENTS



#### Christmas House Tour

Saturday, December 5<sup>th</sup>  
10:00 a.m. – 4:30 p.m.

Tickets are available at the Atglen Library and the Lil'Corner Café. Ticket sales benefit the Atglen and Parkesburg Libraries.

Penningtonville Church will be open during the house tour for lunch and crafters will have their wares available for purchase.

#### Library Holiday Open House

Saturday, December 5<sup>th</sup>  
9:00 a.m. - 4:00 p.m.

For more information on Story Time and photos will Frosty, please contact the library at (610) 593-6848.



### Tree Lighting Ceremony

The entire community is invited on Sunday, December 6<sup>th</sup> beginning at 6:00 p.m. to the Community Tree Lighting Service hosted by Penningtonville Presbyterian Church.  
406 Main Street

6:00 to 8:00 p.m.

Activities will include:

Story Time, Craft, Singing of Silent Night, performance by the Children's Bell Choir, Arrival of Santa Claus and snacks for all. Come join the fun.



The Borough Office will be closed on Thursday, December 24<sup>h</sup> and Friday, December 25<sup>th</sup> for the Christmas Holiday.

**We wish everyone a very Happy Holiday Season.**

### Atglen Borough Council

Dirk Hagen – President  
Larry Lavenberg - Vice-President  
Michael Brock – Member  
Carol (Moyer) McGrath – Member  
William Tipping, II– Member

Wesley Vincent – Mayor